

*** ECONOMICAL SELF-CONTAINED OFFICE TO LET***
MARYLEBONE – 747 SQ FT

GN|2



OFFICE TO LET

37 Queen Anne Street, Marylebone, London
W1G 9JB

747 SQ FT

2nd Floor Office Available To Let on Flexible Terms

GN|2

www.gn2.uk.com

ECONOMICAL SELF-CONTAINED OFFICE TO LET
MARYLEBONE – 747 SQ FT

GN2

PROPERTY LOCATION:

The building commands a prominent position on the south west corner of Queen Anne Street at its junction with Wimpole Street. The immediate area is well served by shops and restaurants located on Marylebone High Street and Oxford Street. The property has good public transport links being in close proximity to Oxford Circus and Bond Street with access to the Central, Victoria, Bakerloo, Elizabeth and Jubilee Lines. Both Baker Street and Marylebone Stations are also within walking distance to the north.

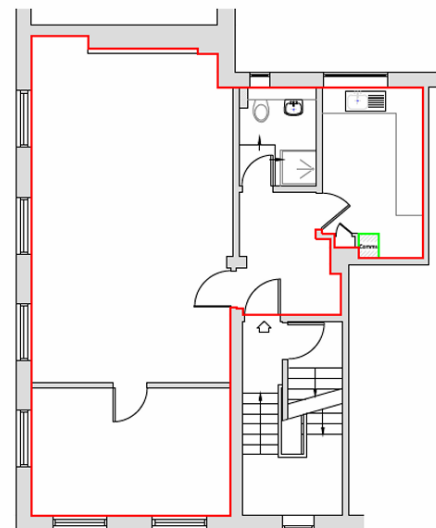


PROPERTY DETAILS:

The second floor, 37 Queen Anne Street is available to let on flexible terms. The floor is accessed via a shared staircase to the self-contained suite with its own shower/WC and separate, demised kitchen. The floor has excellent natural light and high ceilings and the office area is divided into two rooms – one ideal as a meeting room, the other larger, open plan area.

AMENITIES:

- Fully Furnished
- Self-Contained
- Superfast Broadband
- Demised Shower/WC & Kitchen
- Excellent Natural Light
- Storage Area



SECOND FLOOR

SUMMARY:

Size: 747 sq. ft.
Term: Flexible Terms Available
Price: £5,000 pcm
Service Charge: Included in Rent
Business Rates: Included in Rent
The building is VAT Elected

Contact:

Pippa Vincent
GN2

Mobile: 07785 935313

EMAIL: pippa.vincent@gn2.uk.com

Joint Agent:

Catherine Alexander
Bureau

Mobile: 07811 111600

EMAIL: catherine@bureauoffice.co.uk