

ELEVEN

GROSVENOR PLACE



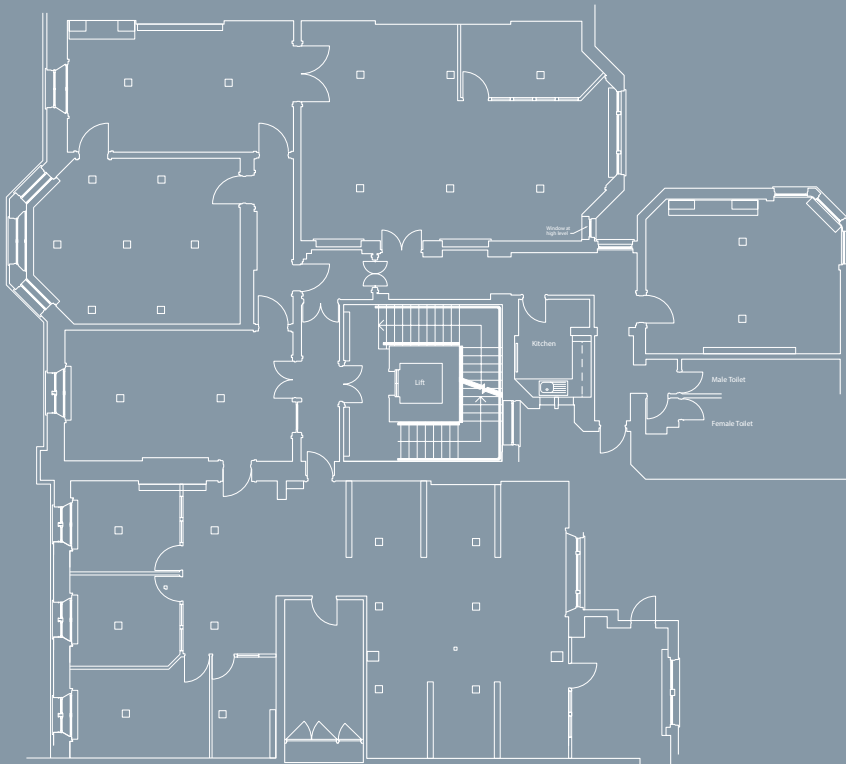


Location

11 Grosvenor Place is located at the northern end of the thoroughfare between the Junction of Chapel Street and Halkin Street. Hyde Park Corner (Piccadilly) Underground Station and Victoria (Circle, District and Victoria) Underground and Mainline Station are all within walking distance.

Description

The 2nd floor offices are accessed via a manned reception and lift from the ground floor. The offices benefit from the high floor to ceiling heights with excellent natural light offering both period and open plan offices with demised WCs.



Accommodation

Floor	sq ft	sq m
2nd	3,995	371.2

Amenities

- Central heating
- Comfort Cooling
- Perimeter trunking
- Recessed lighting
- Male and female WCs
- Kitchen
- Excellent natural light
- Commissionaire
- One passenger lift
- Garage (available by separate arrangement)

Lease

An assignment of the existing lease until 24th March 2024 at the passing rent of £219,725 per annum exclusive.



Julie Rees
+44 (0)7710 257 924
julie.rees@gn2.uk.com

Pippa Vincent
+44 (0)7785 935 313
pippa.vincent@gn2.uk.com

11 Grosvenor Place
Belgravia, London
SW1X 7HH