

Extremely Bright Refurbished Soho Office Floor



Photo shows earlier refurbishment/carpet

Golden House, 30 Great Pulteney Street, London W1

2,900 square feet To Let

- Top floor with superb natural light
- Open plan and column-free
- Air conditioning
- Raised Floors
- 2 wall-climber lifts
- Spectacular full height atrium
- 24 hour access
- To be refurbished, recarpeted
- Available on a new lease from April 2014

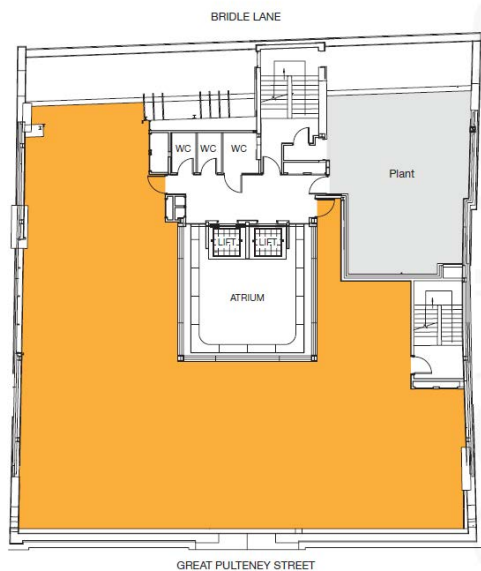
Location

The building is located on the west side of Great Pulteney Street in the heart of Soho between Brewer Street and Beak Street. Soho is one of London's liveliest districts and home to some of the world's leading media brands.

Oxford Circus and Piccadilly Circus are equidistant from the building giving access to the Piccadilly (to Heathrow), Bakerloo, Central and Victoria Lines.

Accommodation

The fifth floor, comprising **2,900 sq ft**, is the top floor of this substantial building and was newly added as part of the comprehensive refurbishment of the building in 2007. With superb natural light and views towards the London Eye, the floor will appeal to media and corporate occupiers alike.



(Floor plan not to scale)

Terms

The floor is available on a new lease for a term by arrangement direct from the freeholders.

Rent

£75.00 per square foot per annum exclusive of VAT, rates and service charges.

Possession

From April 20th 2014

EPC

50 (B)

Viewing

By appointment with GN2, contact Mike MacKeith, Nigel Vaughan or Ed Carter